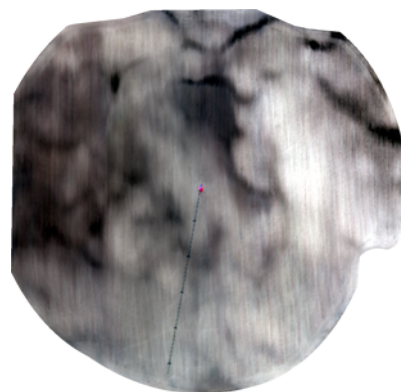




Corn and Soy Overview

We're the provider of choice for growers who want to get the most from every acre.

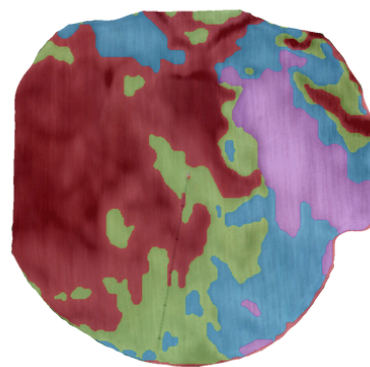
Monitor and optimize field progression with aerial imagery that offers detailed insights into plant health after canopy closure. Ceres AI's advanced analytics build variable rate zones informed by crop health—enabling in-season adjustments so you can be sure you're getting the most from every acre.



Use Cases

VARIABLE RATE APPLICATIONS

Use Ceres AI's analytics tools to create variable rate zones that accurately reflect differences in soil conditions and topography. Monitor, manage, and adjust zones in-season, reducing costs with more targeted and effective applications of nutrients, pesticide, or fungicide



The infrared imagery layer highlights differences between sandier/lighter and heavier soils to create zones for VRA nitrogen applications in corn and potatoes. The red zone is dark/heavy soil that generally requires less nitrogen.

TARGETED SCOUTING

Fast-turnaround, high-resolution aerial imagery makes it easy to pinpoint areas of concern—while our mobile app brings your data into the field on your phone or tablet. Add geolocated scouting notes and photos for more efficient labor routing: no time wasted, no detail lost.

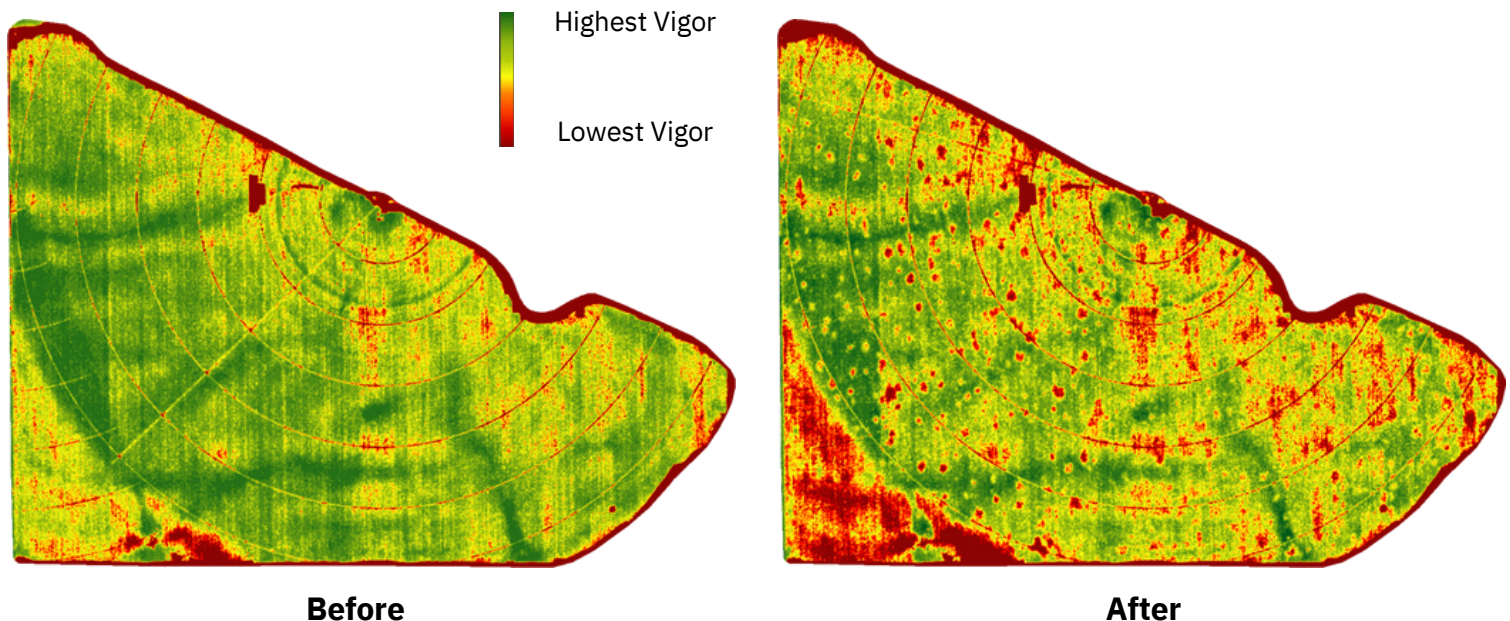
“Ceres AI can give farmers valuable insights and confidence that they will maximize returns on spraying.”

KIRK STEUVE

Soybean grower and remote sensing scientist

IRRIGATION ISSUES

Analyze irrigation system performance and uncover problems that manual inspection may miss—from pressure failures to leaks, clogs, and scheduling and speed control issues. Aerial imagery is a powerful complement to moisture probe data, allowing growers to extrapolate from single sample points to a holistic view of the entire field.



From Imagery To Action

These images show before and after potato aphid damage, highlighting how sensitive our NDVI layer is to canopy health. The grower was able to identify the effected areas and take informed action quickly.

Risk Insights for Sustainable and Profitable Agriculture.

Contact us today to learn more!